

Governance



APA Corporation embraces corporate governance initiatives that further shareholder engagement and align with best practices.

The foundation for our corporate governance is a **Board of Directors with environmental and governance experience** as well as industry and financial leadership, active board oversight of key programs, long-term planning that includes ESG scenario analysis, and some of the most proactive shareholder and stakeholder engagement practices in the industry. Apache's board members are selected based on a wide range of criteria, including relevant expertise; dedication to the highest ethical, health, safety and environmental standards; and a willingness to question and challenge management. The board's diversity encompasses — among other elements — race, gender, age and experience. These directors play critical roles on our board, including chairing the Corporate Governance & Nominating Committee and the Audit Committee, and taking a leading role in our shareholder engagement activities.

KEY DATA



20%

of the 2021 annual incentive compensation plan is tied to ESG goals



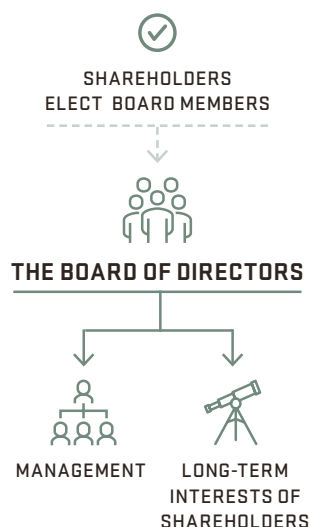
40%

of APA's board members are diverse in terms of gender or ethnicity

We regularly engage with a wide range of stakeholders to gain insights into, and input on, issues, trends, best practices and specific stakeholder interests and concerns. Both the Board of Directors and senior management recognize that the long-term interests of shareholders are advanced by responsibly addressing the concerns of other stakeholders and interested parties, including employees, customers, suppliers, government officials and the community members.

Our independent board chair and other board members are accessible to shareholders at a variety of events including our annual meeting, ESG-focused meetings and a number of governance conferences. In addition, **board members engage with shareholders individually throughout the year**. Board members can also be contacted through our corporate secretary, who relays communications to them as appropriate.

GOVERNANCE BREAKDOWN



Last updated May 2021. Additional information and calculation methodologies are available at apacorp.com/sustainability